

# Estimating Russia's population, 1678-1795

Dmitry A. Khitrov

Lomonosov Moscow University, Faculty of History

Global Historical Population Conference, October 25-26, 2013  
International Institute of Social History, Amsterdam, The  
Netherlands

# Available data

Census	Object of taxation	Demographic data
Piszovye knigi, 1590s – 1620s	Ploughlands	Households + 'people' (?)

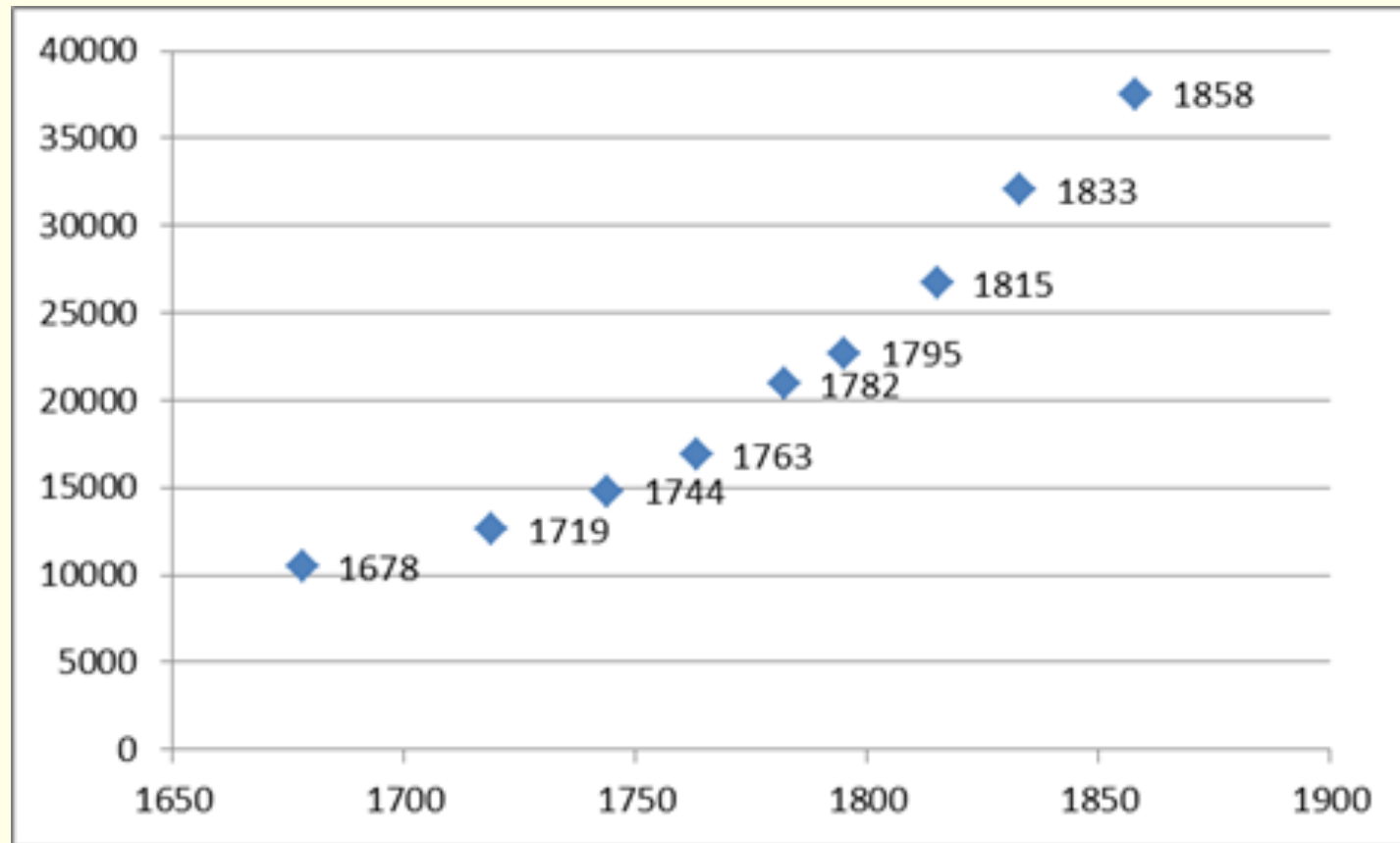
# Available data

Census	Object of taxation	Demographic data
Perepisnye knigi knigi, 1646 and 1678	Households	Households + Male population + Family composition (men only)

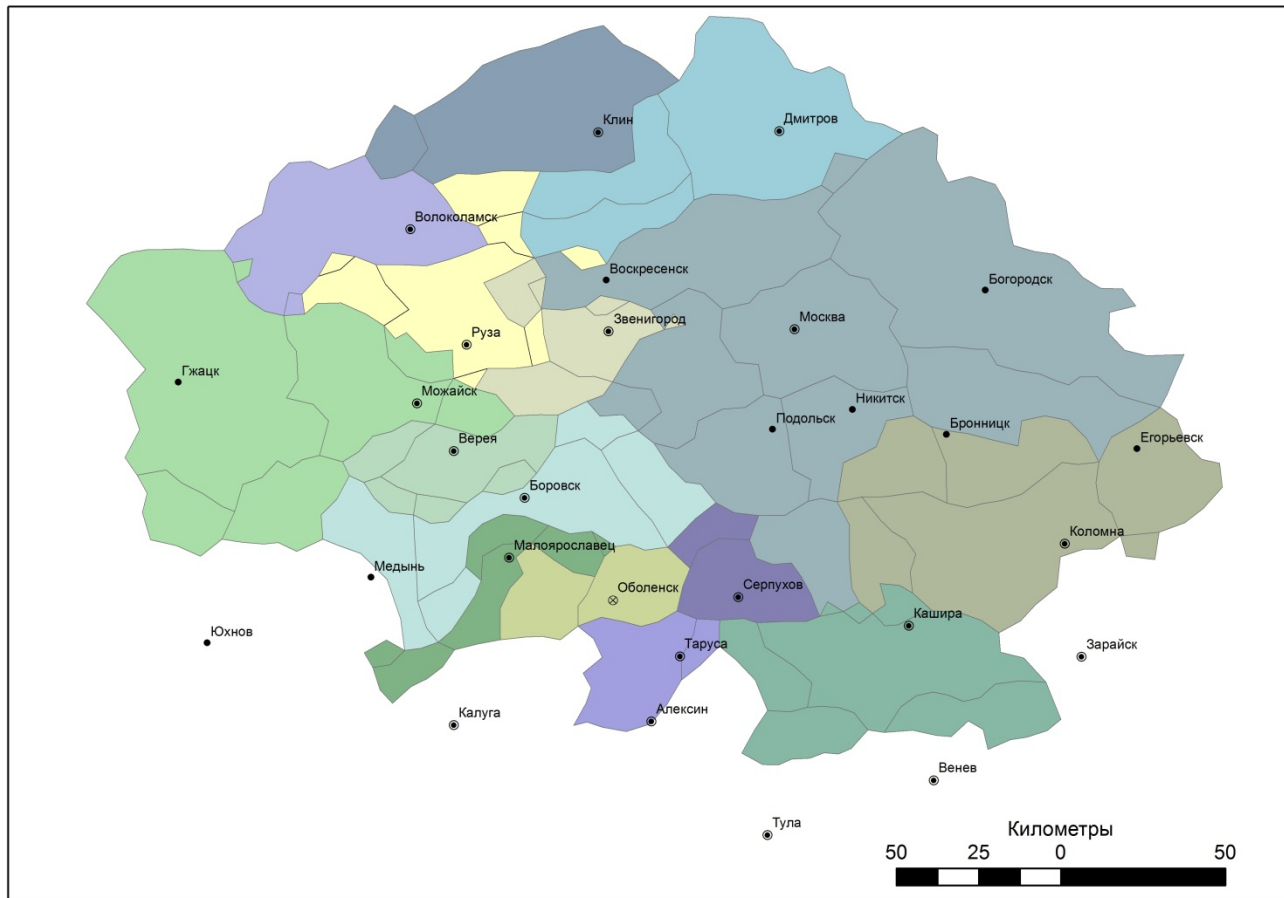
# Available data

Census	Object of taxation	Demographic data
Revizias 1719,1744,1763, 1781, 1795 and on	Male population	Households + Male population + Female population (since 1763)+ Age+ Marrige status + Family compostiton + Mortality

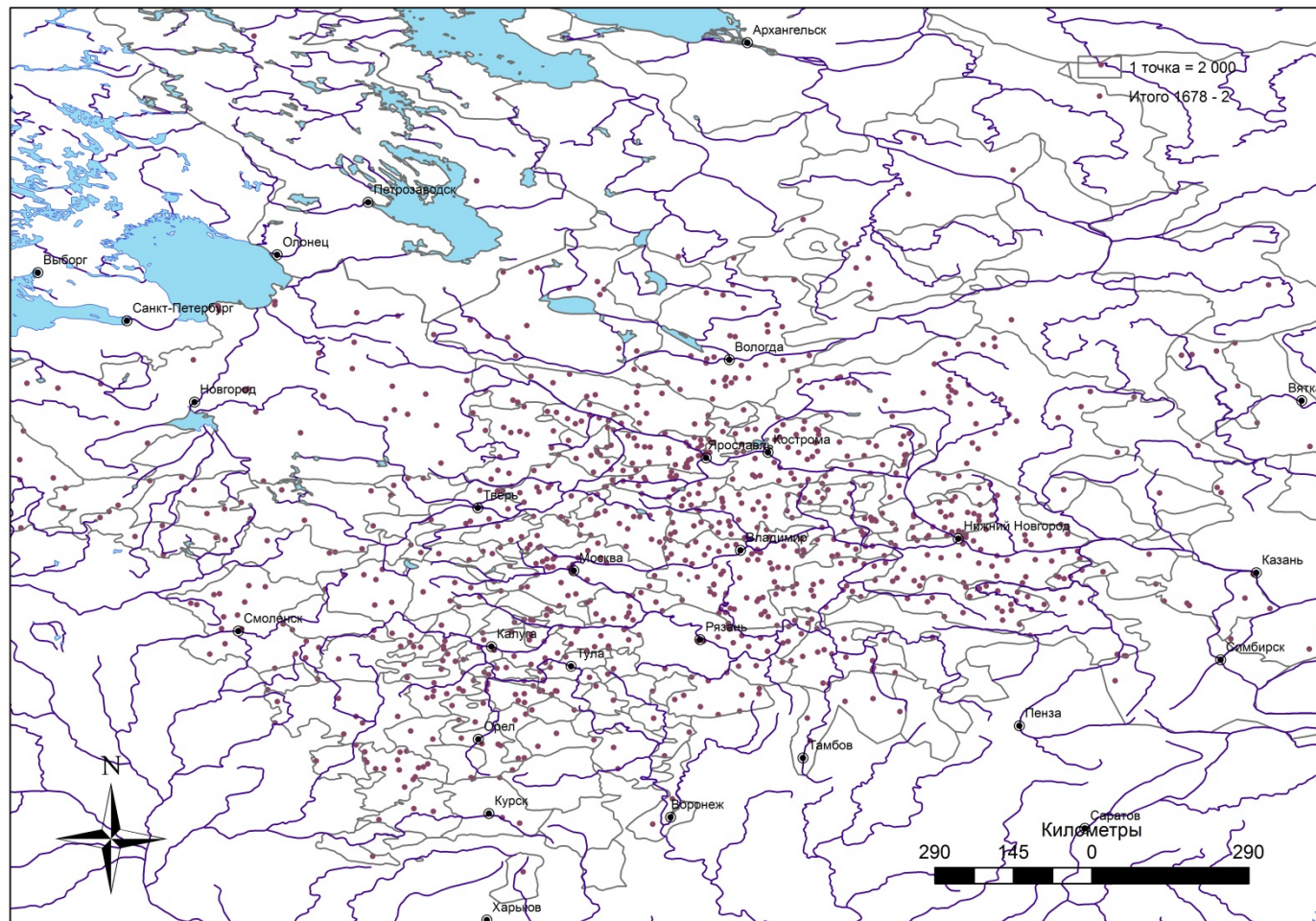
# Model by Vodarsky and Kabuzan (1963, 1971 and other works)



# Territorial comparability

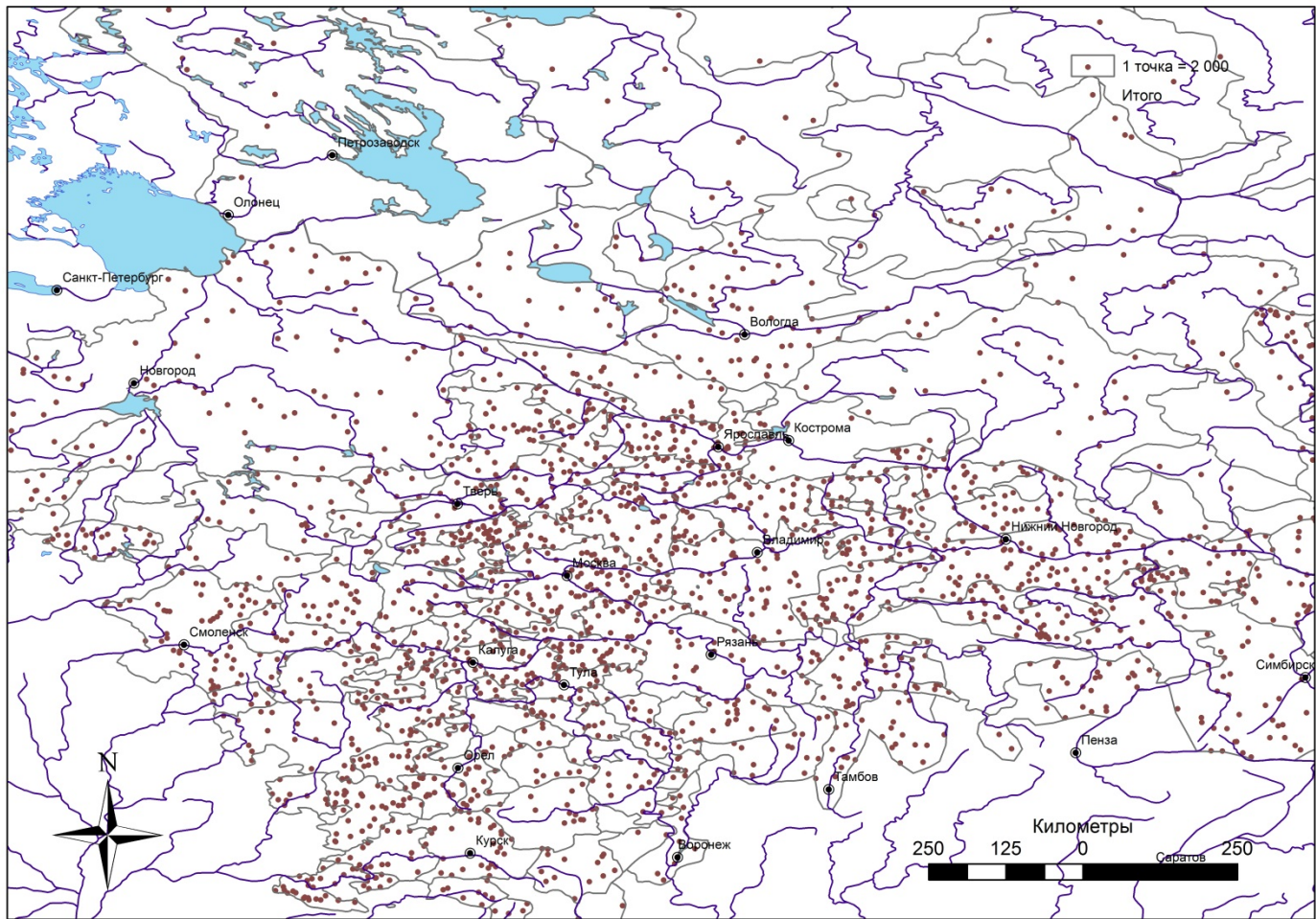


# 1678



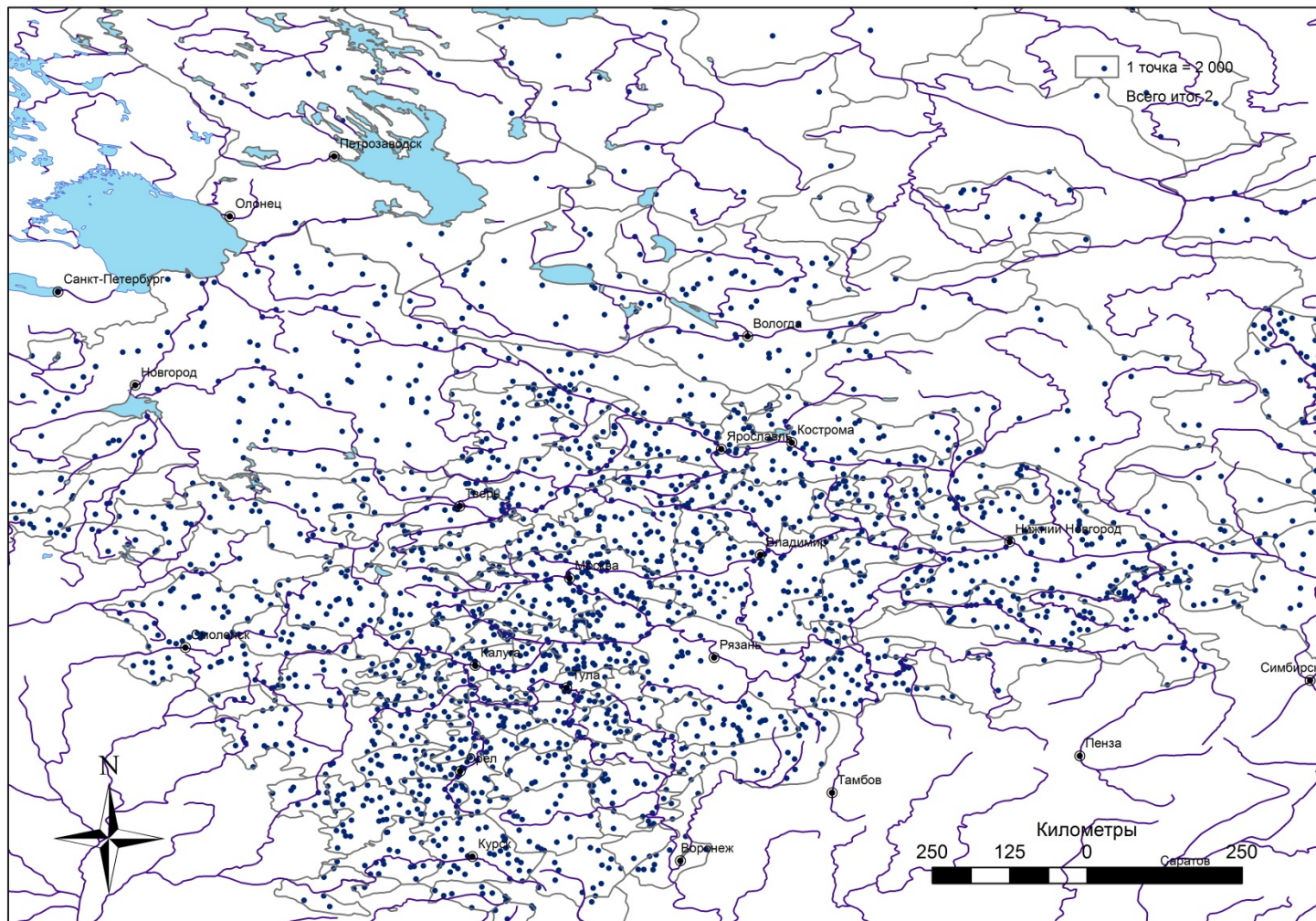


# 1719

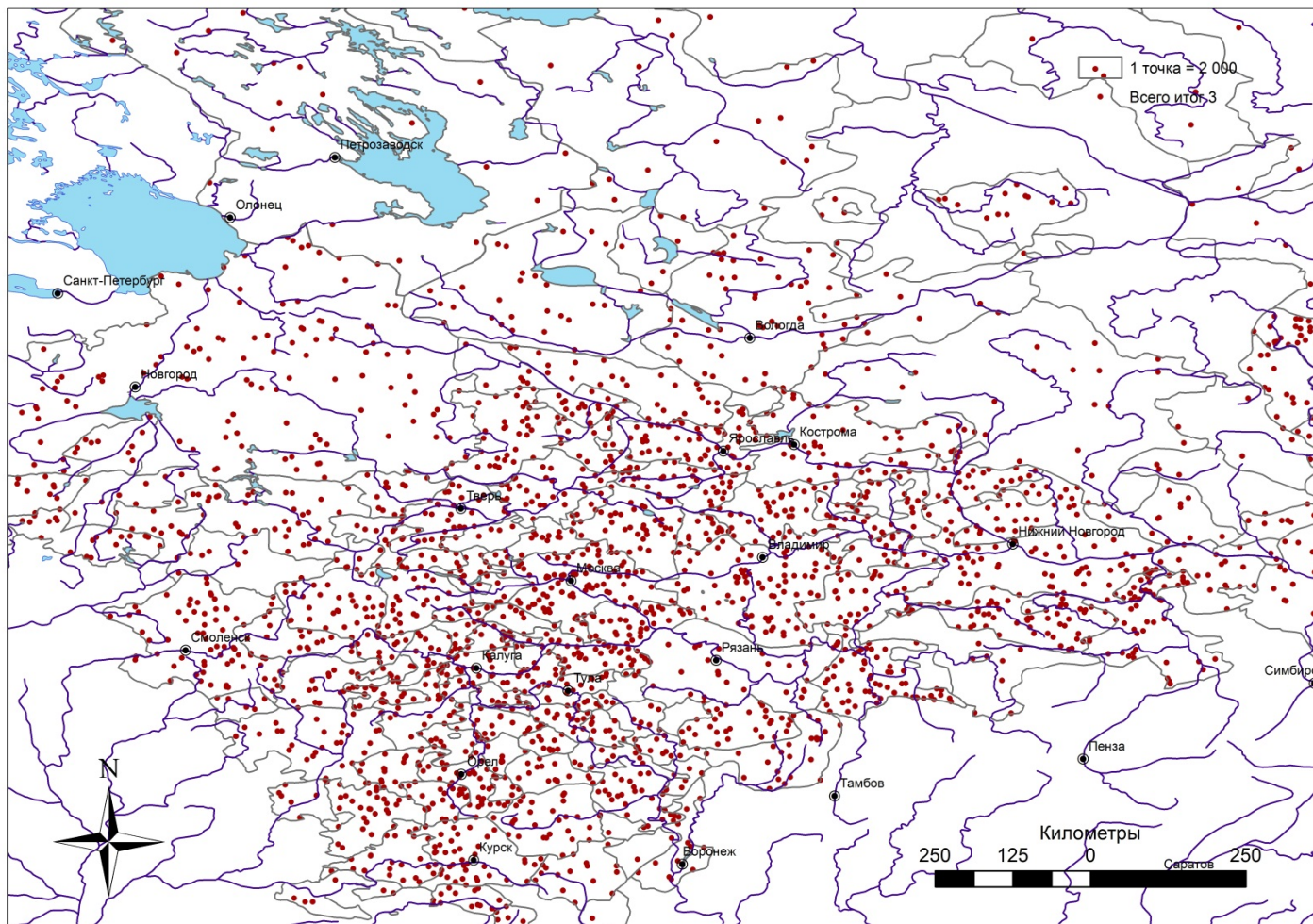




# 1744

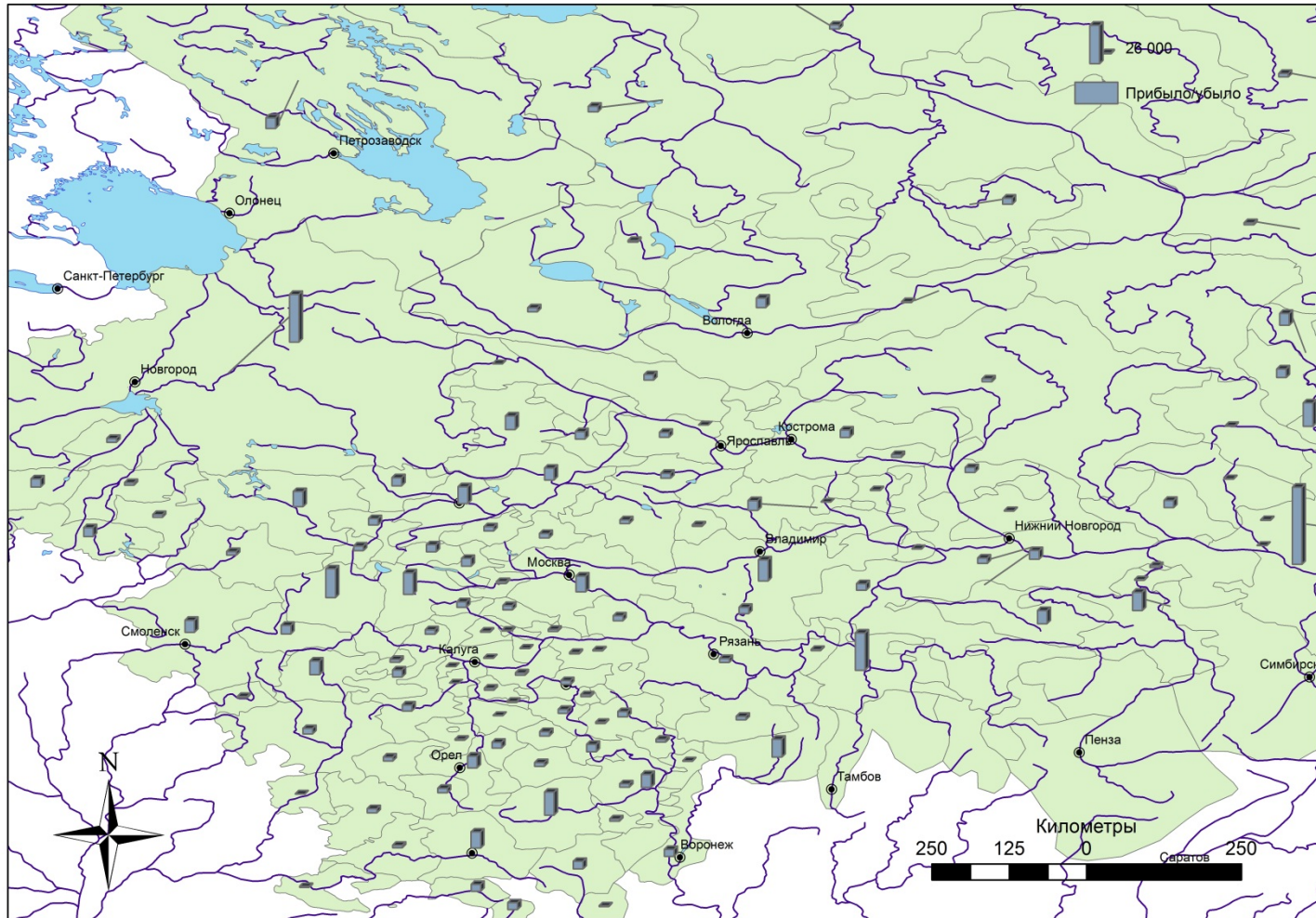


# 1763





# 1744-1763



# 1795

